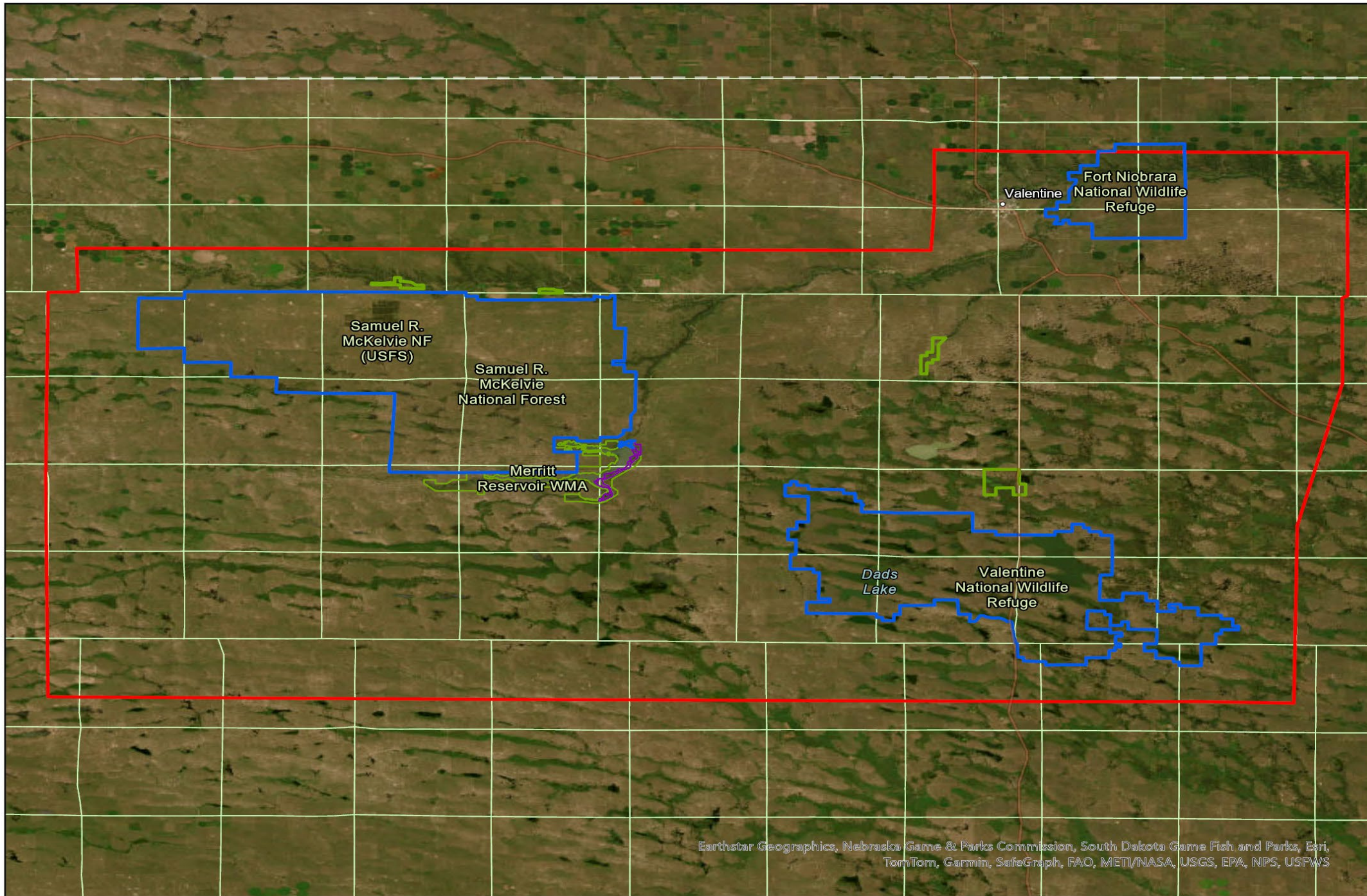


Working Together to Implement Large-scale Invasive Species Removal from a Native Landscape

Juancarlos Giese,
Shelley Steffl and
Greg Wright





Samuel R.
McKelvie NF
(USFS)

Samuel R.
McKelvie
National Forest

Merritt
Reservoir WMA

Valentine

Fort Niobrara
National Wildlife
Refuge

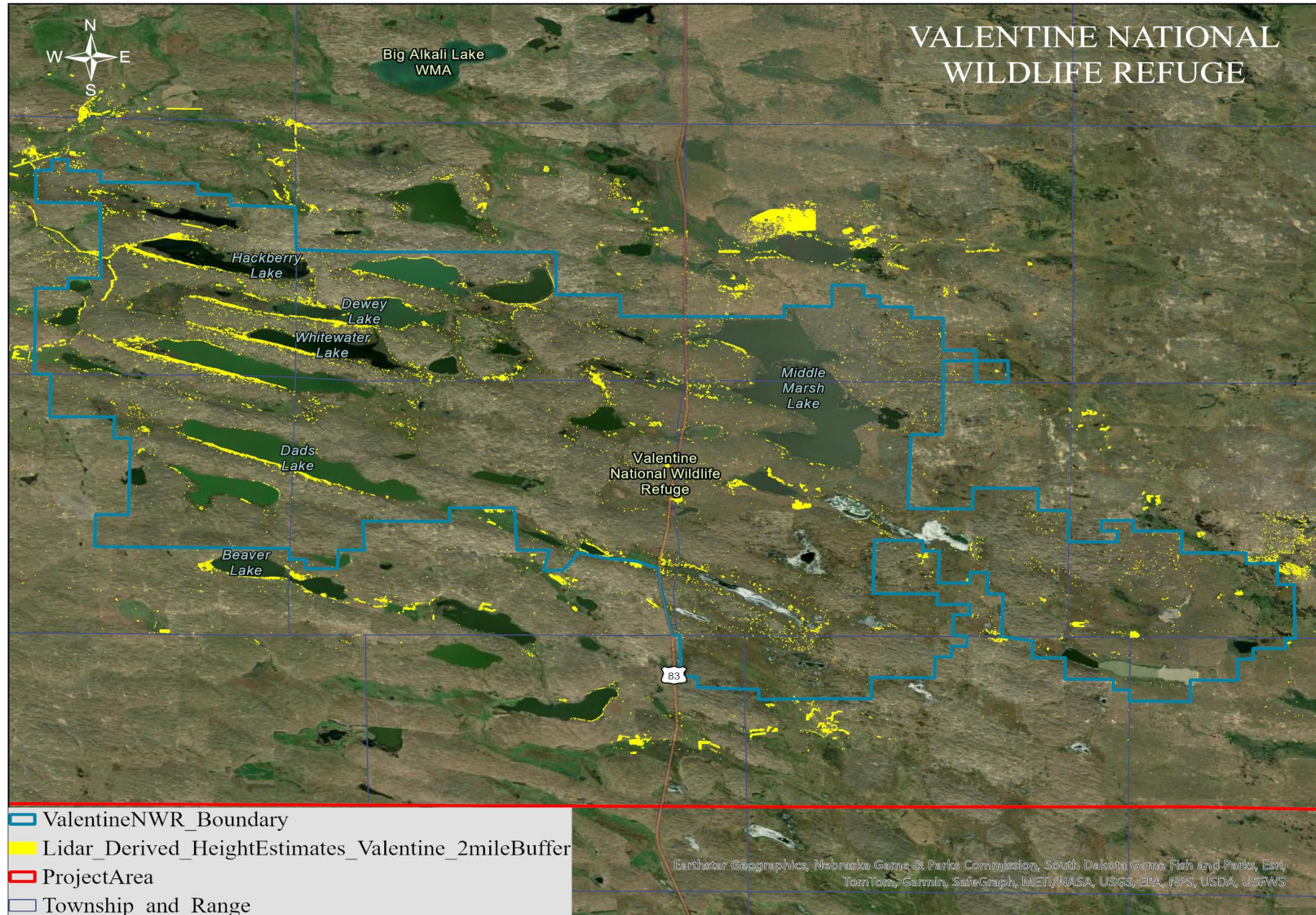
Dads
Lake

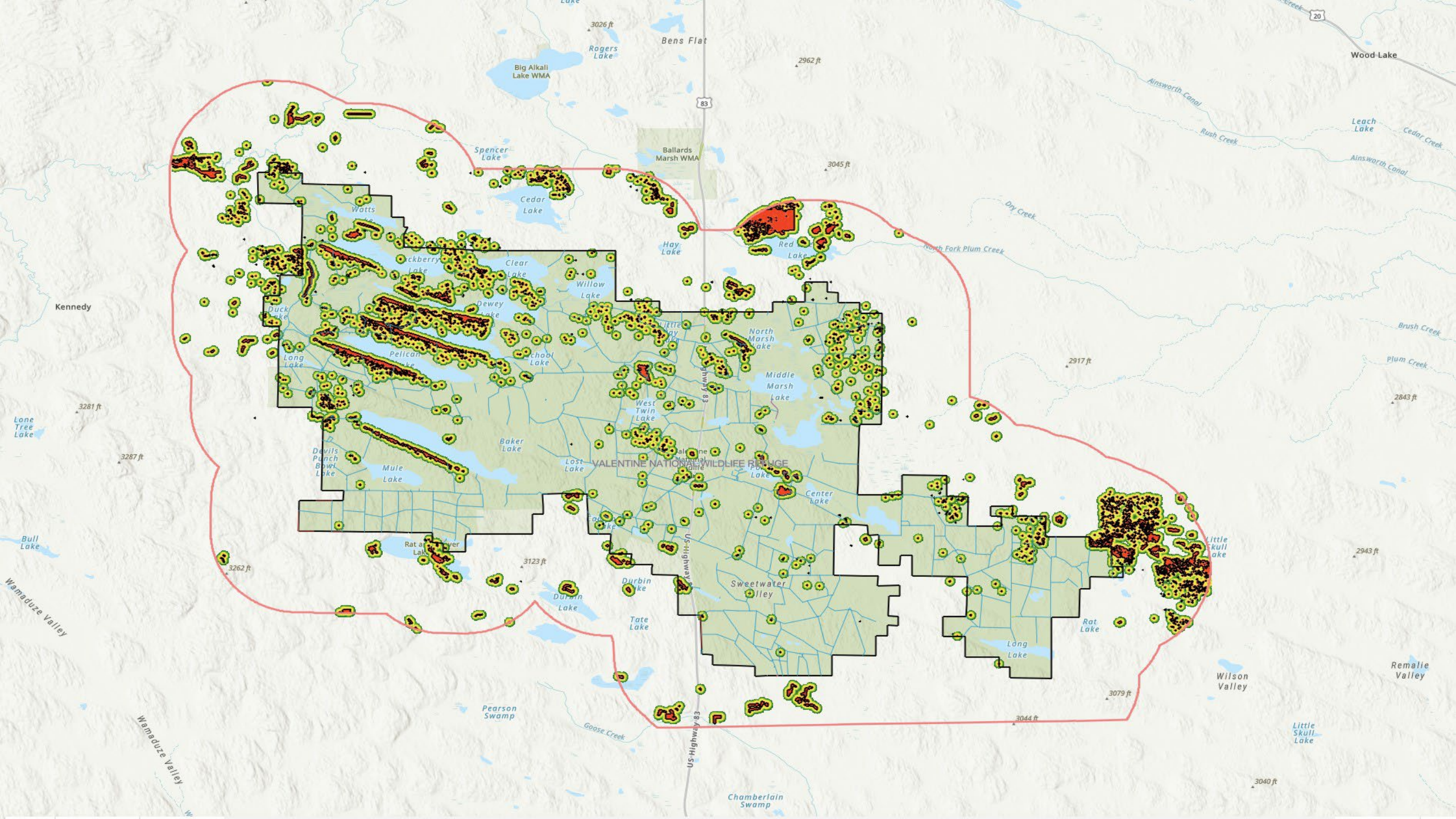
Valentine
National Wildlife
Refuge

Why Create a Core Here?

- This is a hot spot for timber expansion in a sea of largely intact prairie.
- We have a large expanse of publicly owned properties in the this area.
- In this area, we are part of the problem. We need to be part of the solution.
- We have private landowners in the area who are also interested in removing cedar from their lands.
- Presence of Biologically Unique Landscapes

U.S. Fish and Wildlife Service

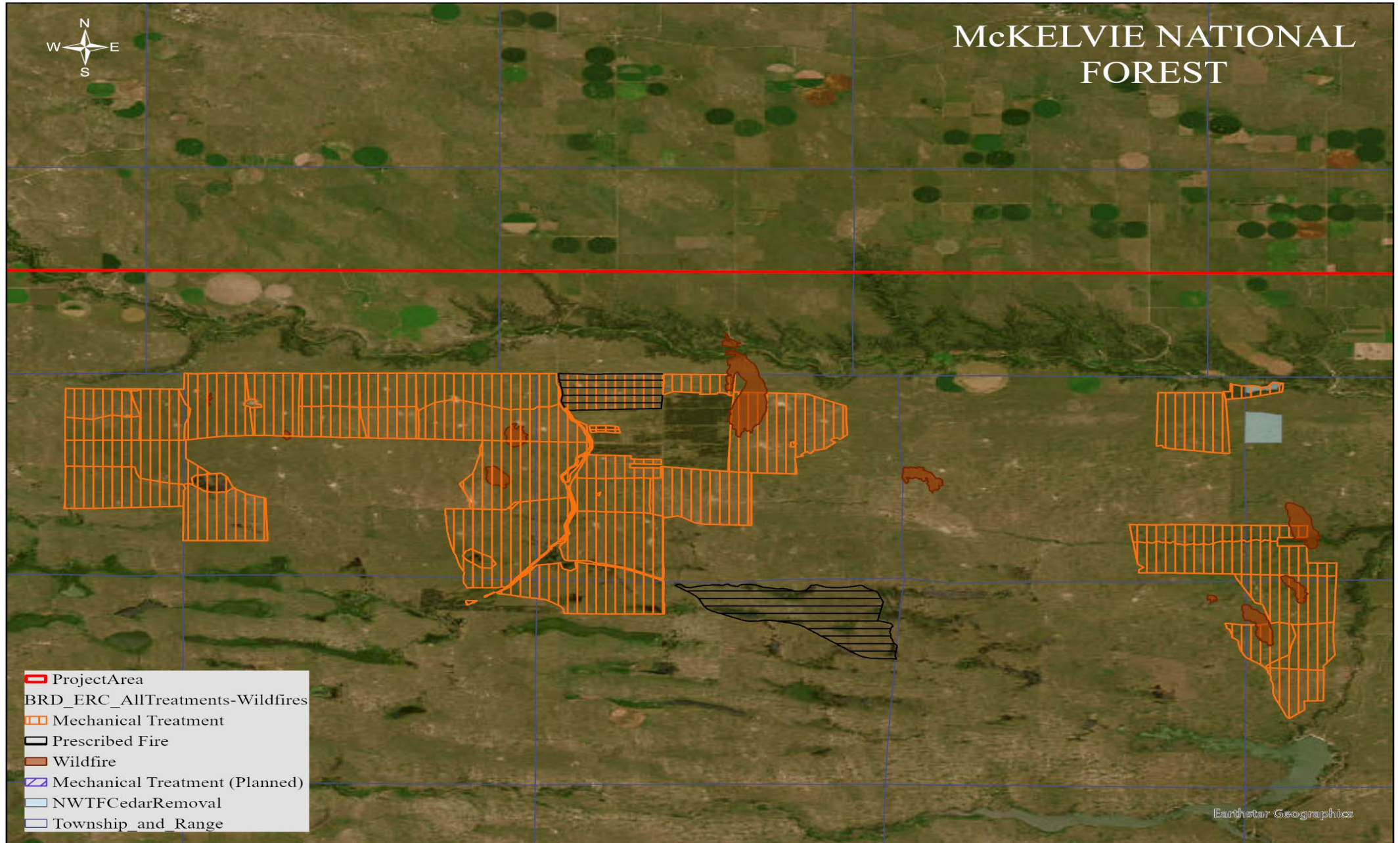




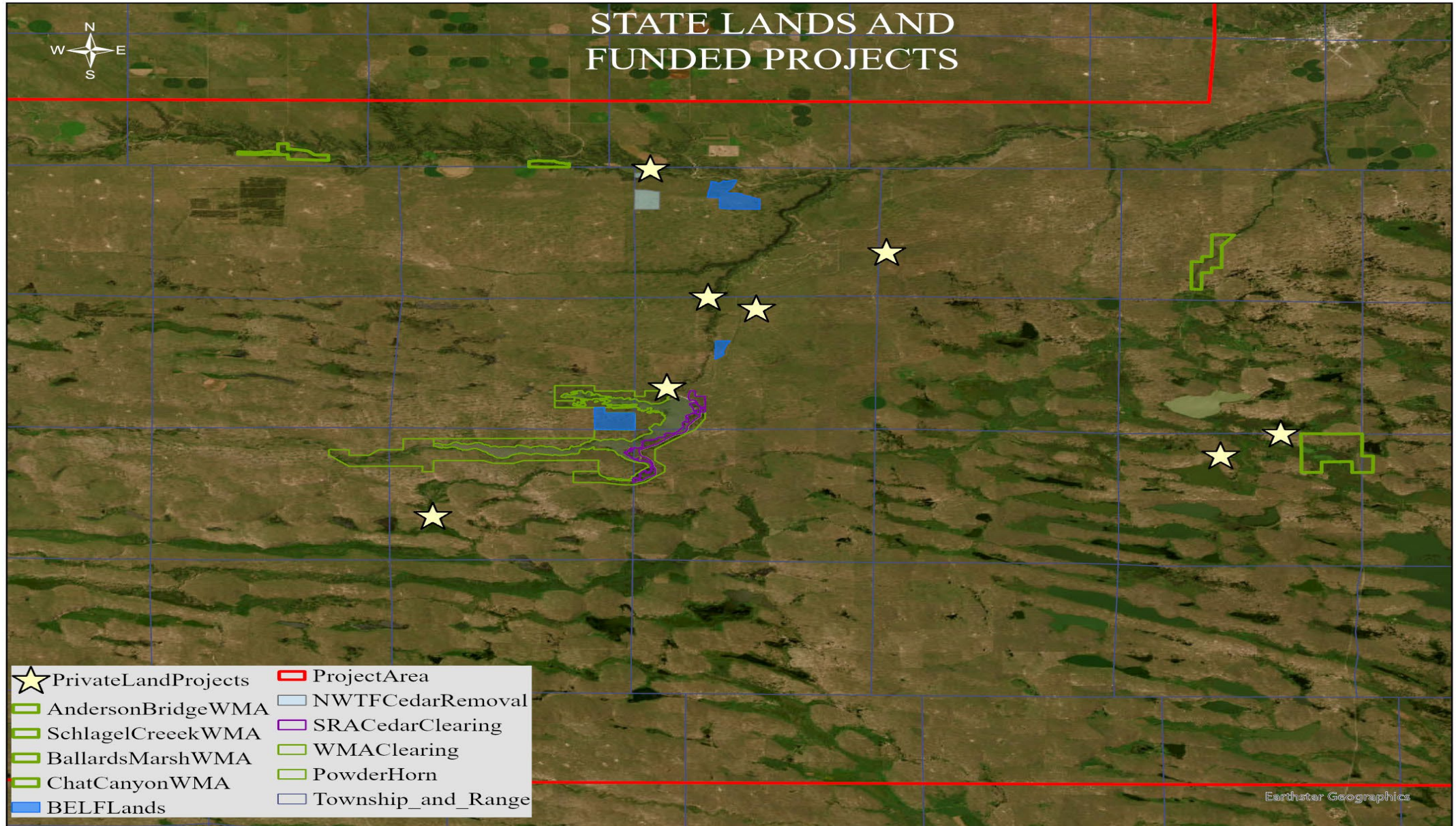


U.S. Forest Service

U.S. Forest Service



Public and Private Land Management Nebraska Game and Parks Commission



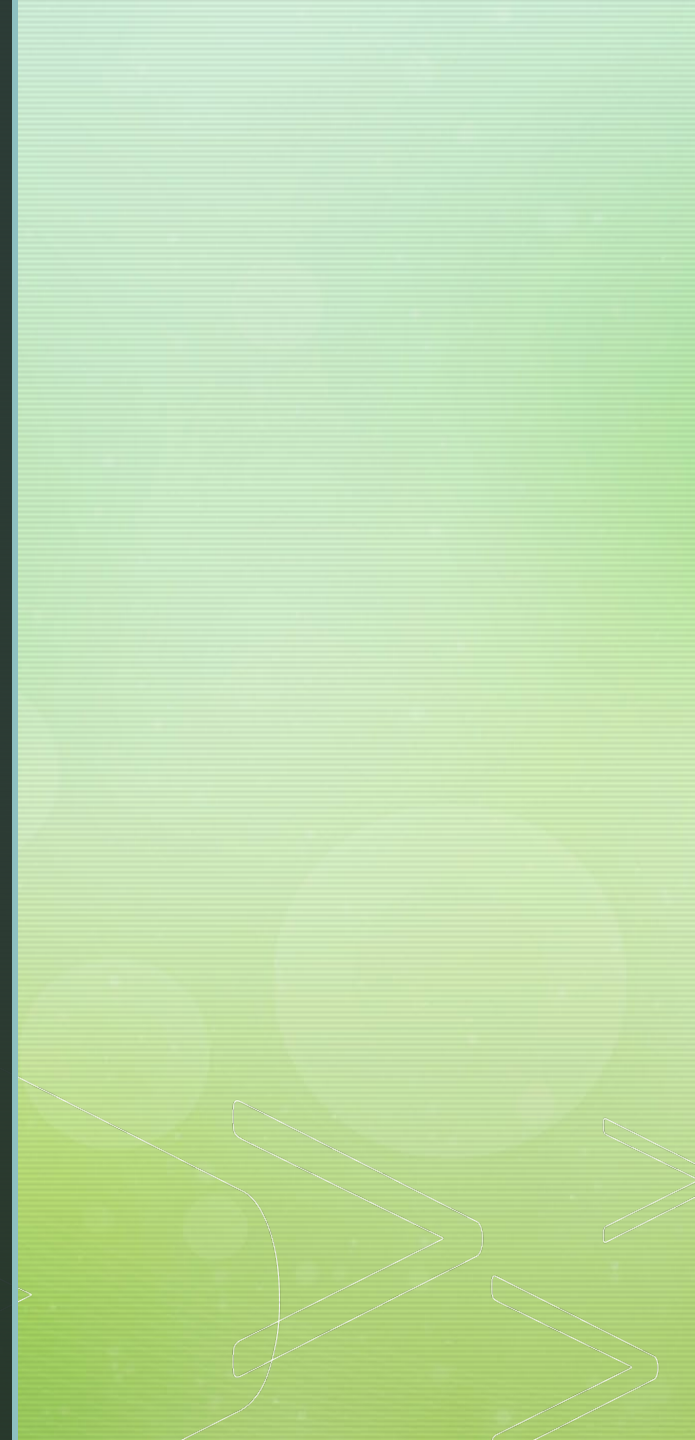


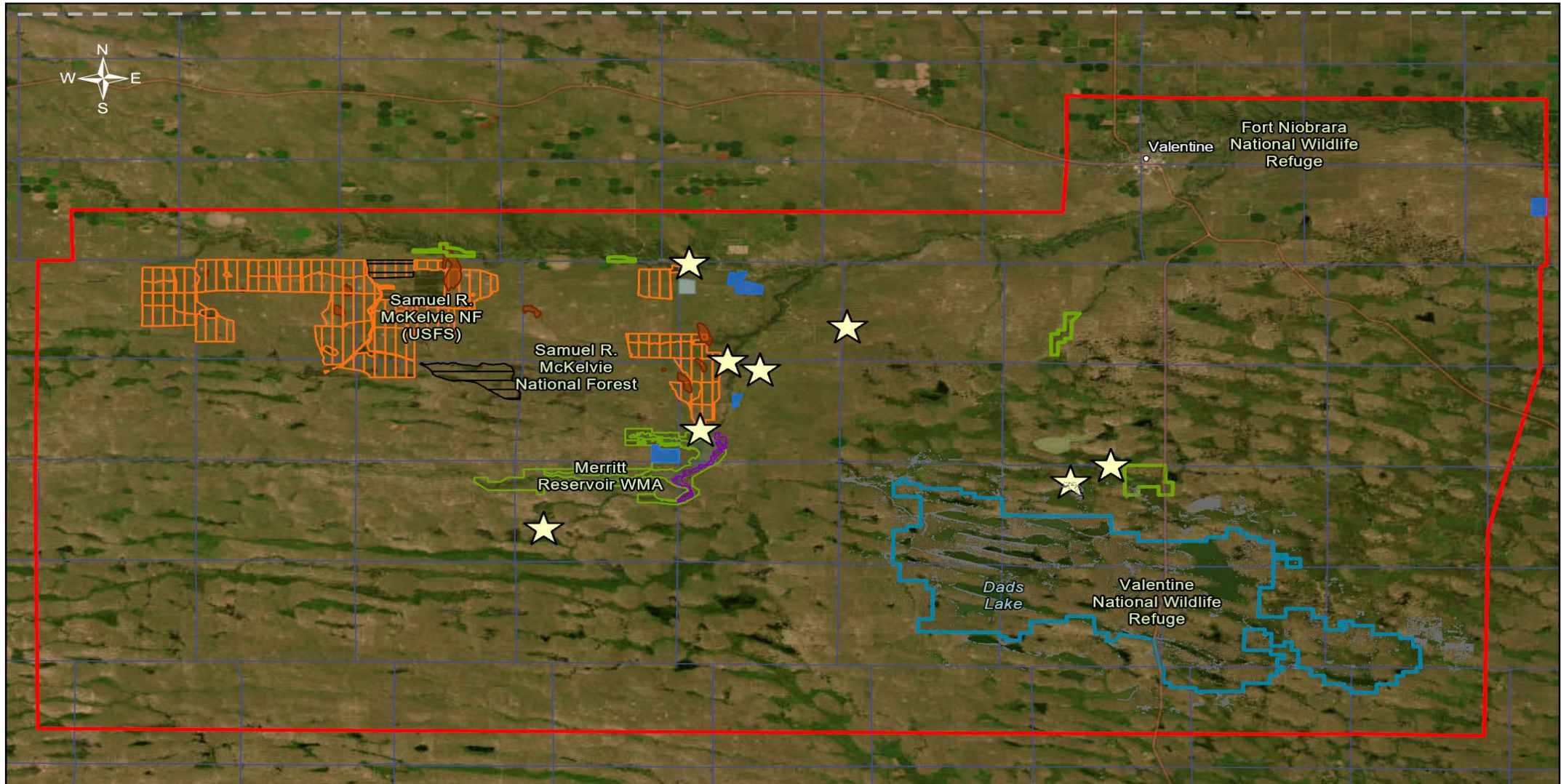
Private Lands Projects

NGPC Project sizes range from 45 to 100,000 acres.

Other Partners working within the area on private lands.

Focus on both prairie and woodland landscapes.





Earthstar Geographics, Nebraska Game & Parks Commission, South Dakota Game Fish and Parks, Esri, TomTom, Garmin, SafeGraph, FAO, METI/NASA, USGS, EPA, NPS, USFWS



Long-term plans to control reinfestations?

- The long-term hope is to use prescribed burning to help control regrowth.
- In areas where prescribed burning is not possible, agencies will use staff as well as volunteers to clear trees mechanically or by hand.
- Private Lands?



QUESTIONS?

