

A large center pivot irrigation system is visible in the upper left, extending across a vast green cornfield. The structure consists of a long metal truss arm supported by a series of towers, with multiple parallel pipes running along its length. The field below is densely packed with young corn plants. The sky is a clear, pale blue.

A Website for Nebraska Producers, brought to you by
the Nebraska Strategic Ag Coalition

Alexa Davis, Department of Natural Resources

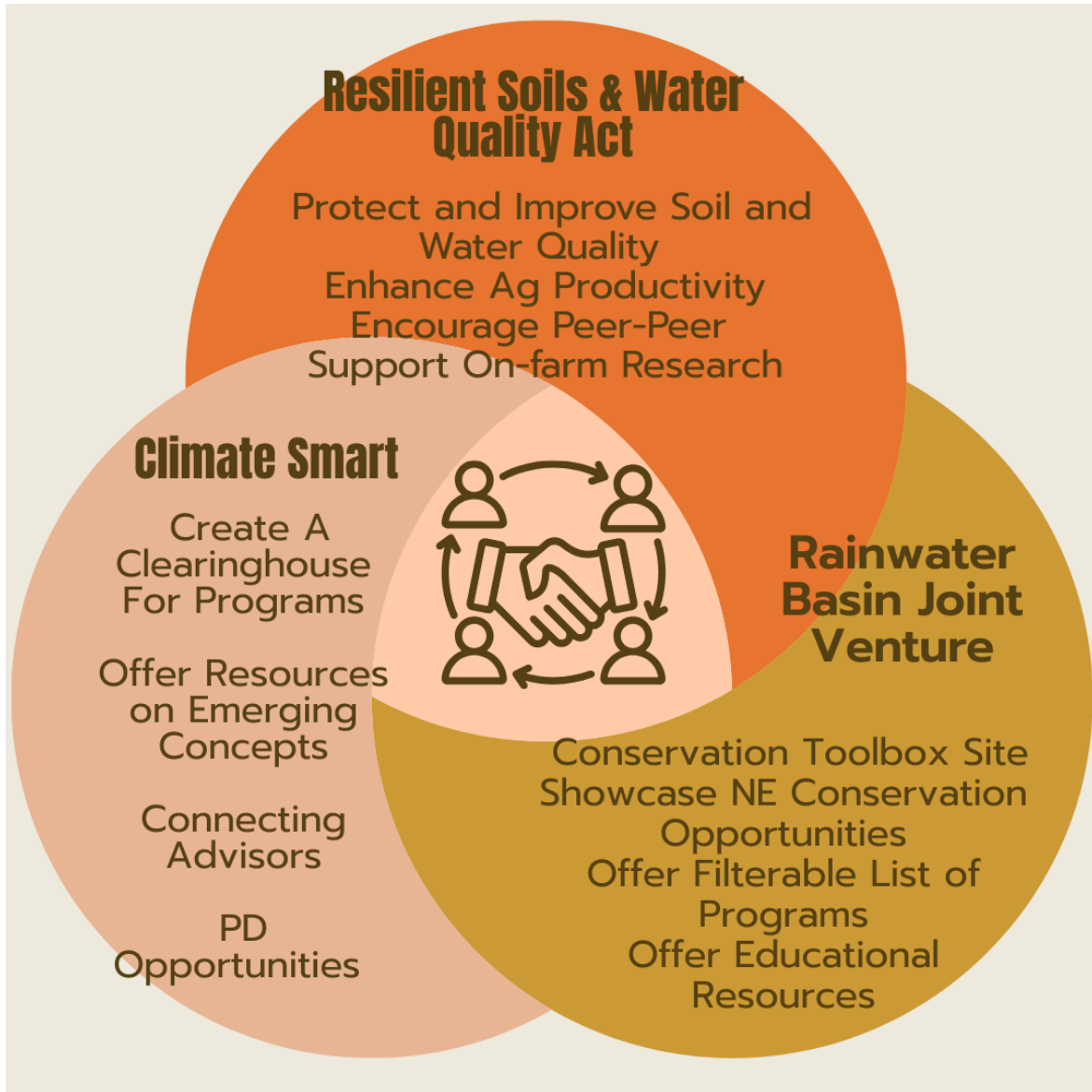
Roadmap

- Who is the Nebraska Strategic Ag Coalition (NSAC)?
- The Needs/ Challenges That Brought Us Together
- Our Flagship Program – A Website for Nebraska's Producers
- Progress To Date & Strategies for Stakeholder Engagement
- Tangential Developments & The Value of Collaboration
- Future Vision and Aspirations





Institute of Agriculture and Natural Resources



A Union Of Overlapping Efforts



402.471.3948

SUBMIT WEBSITE CONTENT

ABOUT THE COALITION

TECHNICAL SUPPORT

EDUCATIONAL RESOURCES

COST SHARE

EVENTS

GRANTS

Our Mission

Learn more about the mission of Nebraska Strategic Ag Coalition

LEARN MORE

Technical Support

Educational Resources

Upcoming Events

Producer Networks





402.471.3948

[SUBMIT WEBSITE CONTENT](#)

[ABOUT THE COALITION](#)

[TECHNICAL SUPPORT](#)

[EDUCATIONAL RESOURCES](#)

[COST SHARE](#)

[EVENTS](#)

[GRANTS](#)

Program Search

Click the buttons below to view the Program Search Database or the Nebraska Program Summary Series Videos.

[PROGRAM SEARCH DATABASE](#)

[NEBRASKA PROGRAM SUMMARY SERIES VIDEOS](#)

Nebraska Program Summary Series Videos

Nebraska Program Summary Series

In this new video series, we will explore multiple Nebraska producer programs to learn more about incentives and cost shares.

Playlist

28 Videos

-  NEBRASKA PATHWAY FOR WL... 1:05
-  NRCS OVERVIEW
-  NRCS TECHNICAL ASSISTANCE
-  NRCS FINANCIAL ASSISTANCE
-  NRCS EASEMENT PROGRAMS
-  NRCS PARTNER PROGRAMS
-  SOIL HEALTH THROUGH NRCS FI...
-  USDA FARM SERVICE AGENCY PA...
-  USDA FARM SERVICE AGENCY CO...
-  USDA FARM SERVICE AGENCY AC...





402.471.3948

SUBMIT WEBSITE CONTENT

ABOUT THE COALITION

TECHNICAL SUPPORT

EDUCATIONAL RESOURCES

COST SHARE

EVENTS

GRANTS

Program Search

Click the buttons below to view the Program Search Database or the Nebraska Program Summary Series Videos.

PROGRAM SEARCH DATABASE

NEBRASKA PROGRAM SUMMARY SERIES VIDEOS

Program Search Database Table

1. Describe your current operation.

Select the applicable type(s) of operation for your farm.

- Livestock (dairy, beef, pork, poultry, eggs)
- Row Crop (corn, soy, wheat, small grains)
- Specialty Crops (fruit, vegetables, forestry / agroforestry, perennial crops)

2. Practices you're interested in using.

Select which type(s) of practices you're planning to use.

- | | |
|--|---|
| <input type="checkbox"/> See All Available Programs | <input type="checkbox"/> Grazing and Pasture |
| <input type="checkbox"/> Agroforestry / Forestry | <input type="checkbox"/> Pasture And Hay Planting |
| <input type="checkbox"/> Forestry Planting and Management | <input type="checkbox"/> Prescribed Grazing |
| <input type="checkbox"/> Wildlife Habitat Planting | <input type="checkbox"/> In-Field Management |
| <input type="checkbox"/> Windbreaks | <input type="checkbox"/> Conservation Cover |
| <input type="checkbox"/> Edge-of-Field Management | <input type="checkbox"/> Cover Crops |
| <input type="checkbox"/> Buffer Strips | <input type="checkbox"/> Crop Rotation |
| <input type="checkbox"/> Denitrifying Bioreactor | <input type="checkbox"/> Reduced- or No-Till |
| <input type="checkbox"/> Drainage Water Management | <input type="checkbox"/> Irrigation |
| <input type="checkbox"/> Grassed Waterway | <input type="checkbox"/> Manure Management |
| | <input type="checkbox"/> Nutrient Management |
| | <input type="checkbox"/> Wetlands |

Questions?

Call us at **402.471.2363** or fill out the form below.

Name

Email

Phone

Message

0 of 300 max characters

SEND MESSAGE

1. Describe your current operation.




Select the applicable type(s) of operation for your farm.

- Livestock (dairy, beef, pork, poultry, eggs)
- Row Crop (corn, soy, wheat, small grains)
- Specialty Crops (fruit, vegetables, forestry / agroforestry, perennial crops)

2. Practices you're interested in using.

Select which type(s) of practices you're planning to use.

- | | |
|---|--|
| <input type="checkbox"/> See All Available Programs | <input type="checkbox"/> Grazing and Pasture |
| <input type="checkbox"/> Agroforestry / Forestry | <input type="checkbox"/> Pasture And Hay Planting |
| <input type="checkbox"/> Forestry Planting and Management | <input checked="" type="checkbox"/> Prescribed Grazing |
| <input type="checkbox"/> Wildlife Habitat Planting | <input type="checkbox"/> In-Field Management |
| <input type="checkbox"/> Windbreaks | <input type="checkbox"/> Conservation Cover |
| <input type="checkbox"/> Edge-of-Field Management | <input type="checkbox"/> Cover Crops |
| <input type="checkbox"/> Buffer Strips | <input type="checkbox"/> Crop Rotation |
| <input type="checkbox"/> Denitrifying Bioreactor | <input type="checkbox"/> Reduced- or No-Till |
| <input type="checkbox"/> Drainage Water Management | <input type="checkbox"/> Irrigation |
| <input type="checkbox"/> Grassed Waterway | <input type="checkbox"/> Manure Management |
| | <input type="checkbox"/> Nutrient Management |
| | <input type="checkbox"/> Wetlands |

PROGRAM NAME	OVERVIEW	PRACTICE(S)	
 <p>A Greener World</p>	<p>This project will expand markets for commodities produced using Climate-Smart regenerative practices, with a focus on increasing accessibility to regenerative farming practices and markets for small and/or underserved producers</p>	<p>Access Control, Agroforestry / Forestry, Alley Cropping, Buffer Strips, Conservation Cover, Conservation Crop Rotation, Contour Buffer Strips, Cover Crops, Critical Area Planting, Crop Rotation, Edge-of-Field Management, Field Borders, Filter Strips, Forest Stand Improvement, Forestry Planting and Management, Grassed Waterway, Grazing and Pasture, Hedgerow Planting, Herbaceous Wind Barriers, In-Field Management, Irrigation Water Management, Nutrient Management, Pasture And Hay Planting, Pollinator Habitat, Prescribed Grazing, Range Planting, Reduced- or No-Till, Riparian Forest Buffer, Riparian Herbaceous Cover, Silvopasture, Tree/Shrub Establishment, Upland Wildlife Habitat Management, Vegetative Barriers, Wetland Restoration,</p>	<p>Learn More</p>
 <p>ADM Re:generations</p>	<p>ADM's Re:generations programs provide payment for farmers currently using or adopting regenerative agricultural practices.</p>	<p>Cover Crops, In-Field Management, Living Roots Year-Round, Nutrient Management, Reduced- or No-Till</p>	<p>Learn More</p>
 <p>Agoro Carbon</p>	<p>Agoro Carbon is a company helping to make the carbon market more accessible</p>	<p>Cover Crops, Grazing and Pasture, In-Field Management, Increased Biodiversity, Nutrient</p>	<p>Learn More</p>

Soil Program Details



Iowa Soybean Association

The Program will develop and expand markets for climate-smart commodities and their resulting environmental benefits: 1) the market for CO₂e insets associated with the production of commodities used in key food and fuel supply chains; 2) the market for water quality improvements generated by the introduction of climate smart practices; 3) the market for verified climate-smart corn, soy, sugar beet and wheat commodities; 4) the market for biofuel inputs using commodities produced with climate-smart practices

[Visit Website](#)

Farm Eligibility



Money Matters



Contracting Info



Technical Info



Iowa Soybean Association

The Program will develop and expand markets for climate-smart commodities and their resulting environmental benefits: 1) the market for CO2e insets associated with the production of commodities used in key food and fuel supply chains; 2) the market for water quality improvements generated by the introduction of climate smart practices; 3) the market for verified climate-smart corn, soy, sugar beet and wheat commodities; 4) the market for biofuel inputs using commodities produced with climate-smart practices

[Visit Website](#)

Farm Eligibility

Start Date

Mar-23

Eligible Practices

- Conservation Crop Rotations
- Cover Crops
- Nutrient Management
- Pasture and Hayland Planting
- Reduced- or No-Till

Money Matters

Payment Schedule

50% of yearly payments will be provided within two weeks of contract signing to address upfront cost barriers associated with practice implementation. Once sampling and verification are completed, farmers receive the other 50%.

Price

\$40 per metric ton of CO2e

Stackability (With government programs and other markets)

Refer to program category descriptions for general stackability potential. Reach out to the program contact for more information.

Carbon Related Incentive

Inset

Contracting Info

Contract Length

Five year contracts

Data Collected at Enrollment

Field boundaries and operational data, including climate-smart conservation practice information.



Submit Program Content!

Nebraska Grazing Exchange

Nebraska Grazing Exchange

[GRAZING MAP](#) [ABOUT](#) [CONTACT](#) [LOGIN](#) [CREATE ACCOUNT](#)

The map overlay shows sites where fields are available for grazing, as well as livestock producers with animals they are willing to move to grazing sites. Zoom in to see all sites and herds that are available. Reference the legend to the right to clarify what type or livestock or forage is represented. Click on the marker or additional information that has been entered by the account holder about the field or herd, or to transmit your information and a short message to that account holder. Utilize the search box or drop-down menus to narrow your search by address, forage type, or grazing season.

LIVESTOCK Cattle Sheep Goats Other / Mixed
LAND BASE Pasture Native / Rangeland Crop Residue Cover Crop Others

Search by Address or Location... Search by Forage Type... All Livestock Types All Seasons

Map Satellite

Native / Rangeland
ALEXA DAVIS-TEST
Acres: 100
Grazing Seasons Summer
Certified Organic: yes
Existing Fence: No
Water Availability: No
Herbicide History: None
[Contact Owner](#)
[View/Rate Owner](#)

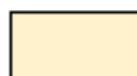


Connecting livestock producers and those with available cropland or forage to graze by utilizing a FREE interactive map!



Integrating livestock onto cropland and proper grassland management are key steps in increasing overall soil health and productivity.

Phase One			Phase Two				
February	March	April	May	June	July	Aug.	Sept.
Invite content submissions (cost-share, education resources, producer networks)		Host pilot sessions (producers)	Invite submissions for summer calendar events	NeDNR Field Days (minimum of 6 statewide) <ul style="list-style-type: none"> • Showcase practices • Peer-peer opportunities • Website engagement 			Host interactive booth at Husker Harvest Days
Finalize content submission platform	Optimize submission process	Fine tune look & feel of website	Launch events calendar	Continue to fine tune based on stakeholder and producer feedback			
	Optimize filtering tool		Build out technical support directory with intent to launch prior to Husker Harvest Days				

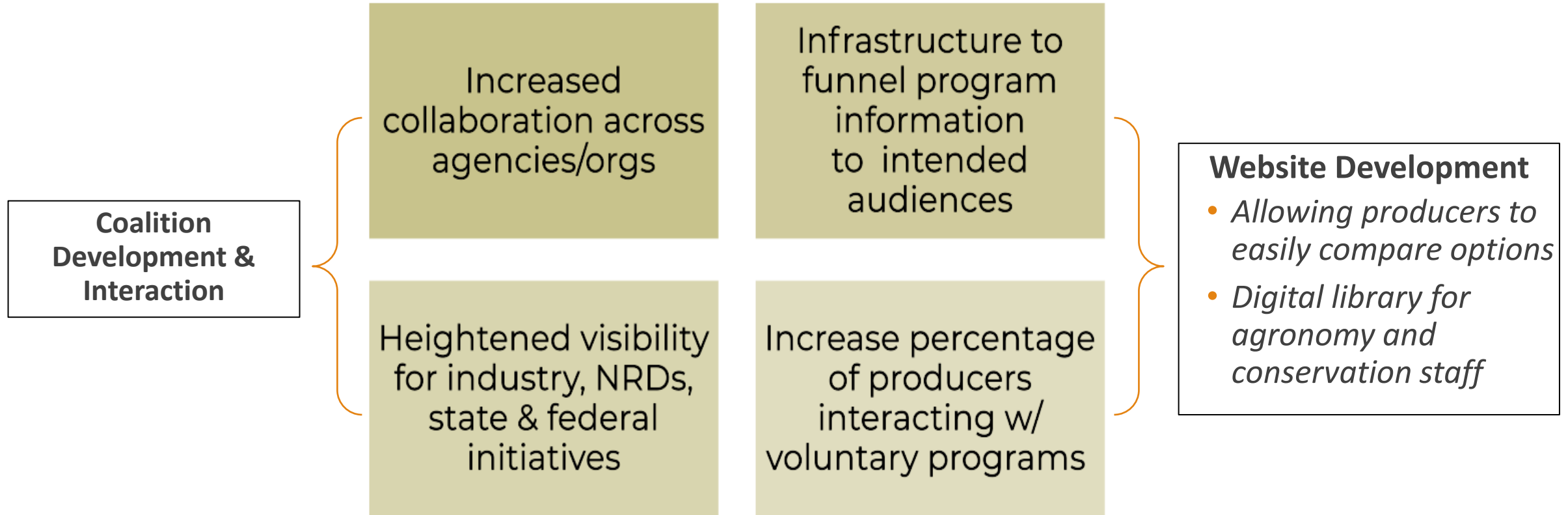


= Stakeholder Outreach



= Web Development

The Value NSAC Brings



A clearer picture of statewide program reach & involvement

2024 NRCS Soil Health & Sustainability Training for Field Staff



Producer Networks

Are you looking for ways to get involved in your community or meet other peers?

Check out the organizations below to learn more or get involved!



Nebraska Grazing Exchange

The Nebraska Strategic Ag Coalition group has funded an online interface that connects land owners who do not have grazing animals to livestock owners who can provide grazing management services. To create a free account, [click here!](#) Create a pin by entering your information about either your animals or your land. Finally, make a match and connect with others in your area!

If you have questions, please contact Alexa Davis:

alexa.davis@nebraska.gov | 402.471.3948



Testing AG Performance Solutions (TAPS)

Get involved in TAPS!

The University of Nebraska Testing Ag Performance Solutions (UNL-TAPS) is a unique program by the University of Nebraska, combining real-life farm management competitions with interactive learning. It involves UNL experts, farmers, industry leaders, students, and government personnel in a network to improve profitability and efficiency in agriculture. Participants experiment with strategies and technologies in a low-risk setting and gain access to valuable data. Supported by various entities, including the University of Nebraska extension and industry leaders, UNL-TAPS fosters collaboration and innovation in agriculture.



Master Irrigator Program

Vision for the Website/ Aspirations for NSAC

For the Website

- Bringing All of Ag to the Table
- Finding a Long-term Steward
- Website Advisory
- Stakeholder Engagement & Outreach

For NSAC

- Capacity Building
- Space for Cross Collaboration

LEGISLATIVE BILL 1368

Approved by the Governor April 16, 2024

Nitrogen Reduction Incentive Act

Introduced by Ibach, 44; Bostar, 29; Conrad, 46; Dorn, 30; Halloran, 33; Jacobson, 42; Kauth, 31; Meyer, 41; Murman, 38; Sanders, 45; Holdcroft, 36; Hardin, 48.

A BILL FOR AN ACT relating to natural resources; to amend section 46-296, Reissue Revised Statutes of Nebraska, and section 61-218, Revised Statutes Supplement, 2023; to adopt the Nitrogen Reduction Incentive Act; to repeal certain administrative fees relating to the Department of Natural Resources; to provide for a transfer from the Water Resources Cash Fund; to harmonize provisions; to repeal the original sections; and to outright repeal section 33-105, Reissue Revised Statutes of Nebraska.

Be it enacted by the people of the State of Nebraska,

Section 1. Sections 1 to 7 of this act shall be known and may be cited as the Nitrogen Reduction Incentive Act.

Sec. 2. The Legislature finds and declares that:

(1) Agriculture is Nebraska's number one industry;

(2) Water is Nebraska's most precious natural resource;

(3) Nebraska farmers are leading the charge on sustainable agriculture initiatives that will make Nebraska a world-renowned leader and ensure protection of the land and water of Nebraska for generations to come; and

(4) The Nitrogen Reduction Incentive Act encourages farmers to adopt efficient and sustainable practices to help Nebraska protect these natural resources and positions Nebraska farmers to compete.

Sec. 3. For purposes of the Nitrogen Reduction Incentive Act, commercial fertilizer has the same meaning as in section 81-2,162.02.

Sec. 4. (1) The nitrogen reduction incentive program is created and shall be administered by the Department of Natural Resources. The department may collaborate with natural resources districts to administer the program.

(2) The purposes of the program are to:

(a) Provide incentive payments to farmers; and

(b) Encourage farmers to (i) reduce the use of commercial fertilizer and (ii) incorporate innovative technology into farming practices, including the proper use of biological nitrogen products.

(3) The program shall provide an annual per-acre incentive for any farmer who verifies through documentation that commercial fertilizer rates were reduced by the lesser of forty pounds per acre for nitrogen or fifteen percent by incorporating a qualifying product in the farmer's nutrient plans.

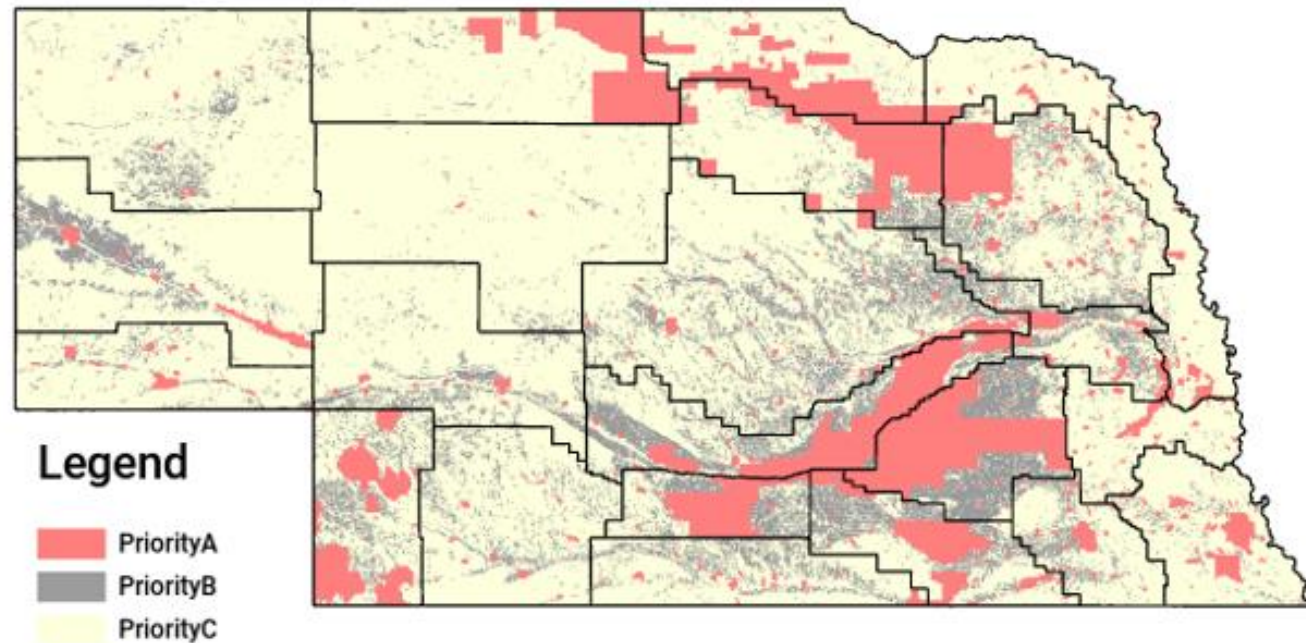
(4) A commercial fertilizer rate reduction from historic baseline use shall be completed to qualify for the program.

(5) The department shall review the required commercial fertilizer rate of reduction for the program on a biennial basis to determine if higher reduction targets are necessary.

(6) The department shall

Initial Interest

Over 1,300 applications totaling a little less than \$2 million



Thank You For
Listening

Questions?

Alexa Davis

Soil & Water Conservation Coordinator

NE Department of Natural Resources

Alexa.Davis@nebraska.gov

(402) 471-3948
