

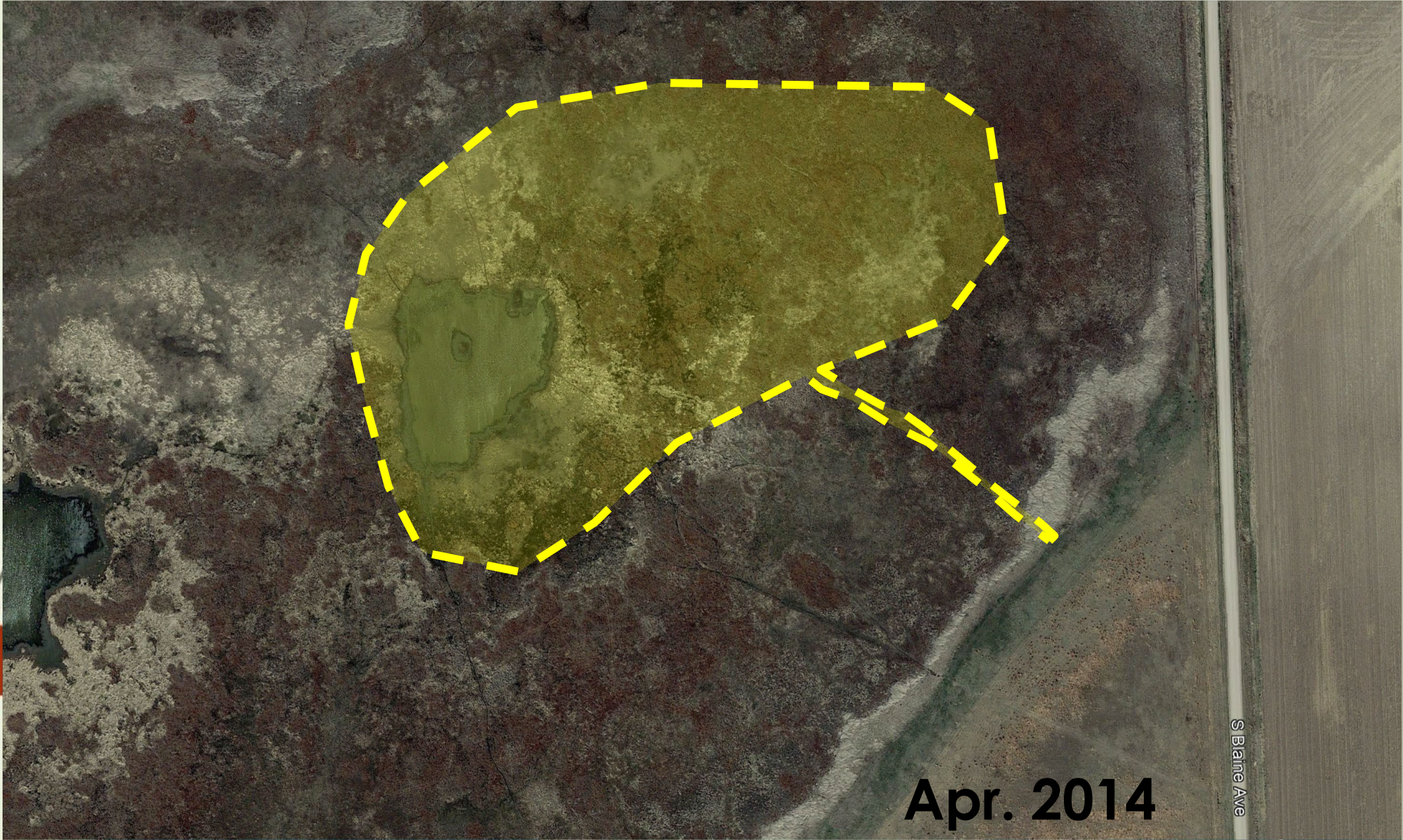


Ayr Lake WMA- Design and Implementation of Small Improvements

Casey Campbell, Regional Engineer, Ducks Unlimited

Justin Haahr, Wildlife Biologist, NE Game and Parks



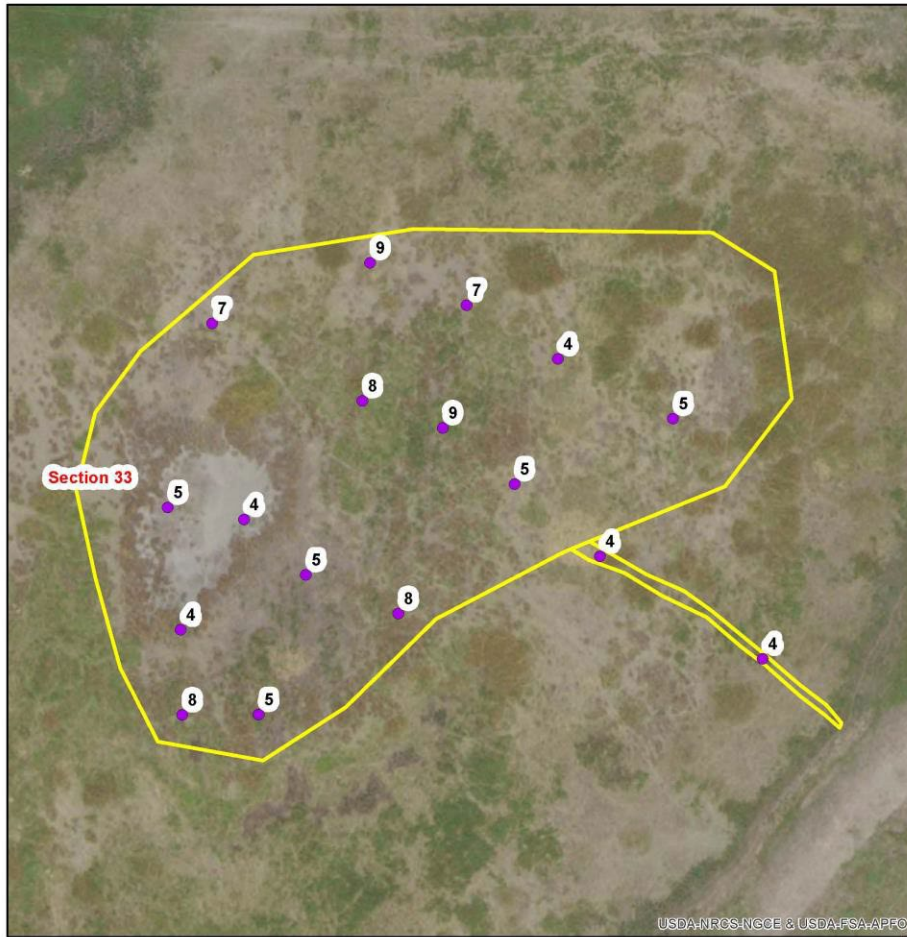


Apr. 2014

S Blaine Ave

Depth to Bt1 - Inches

Customer Name: Ayr Lake WMA **NRCS Admin. Office:** Grand Island
Legal Description: 33-7-9W Adams County **Finalized By:** Rebecca Hodges



0 80 160 320 Feet Map Created: 11/18/2020

Legend

- Points
- ▭ Sections
- ▭ Ayr Lake WMA excavation
- NAIP

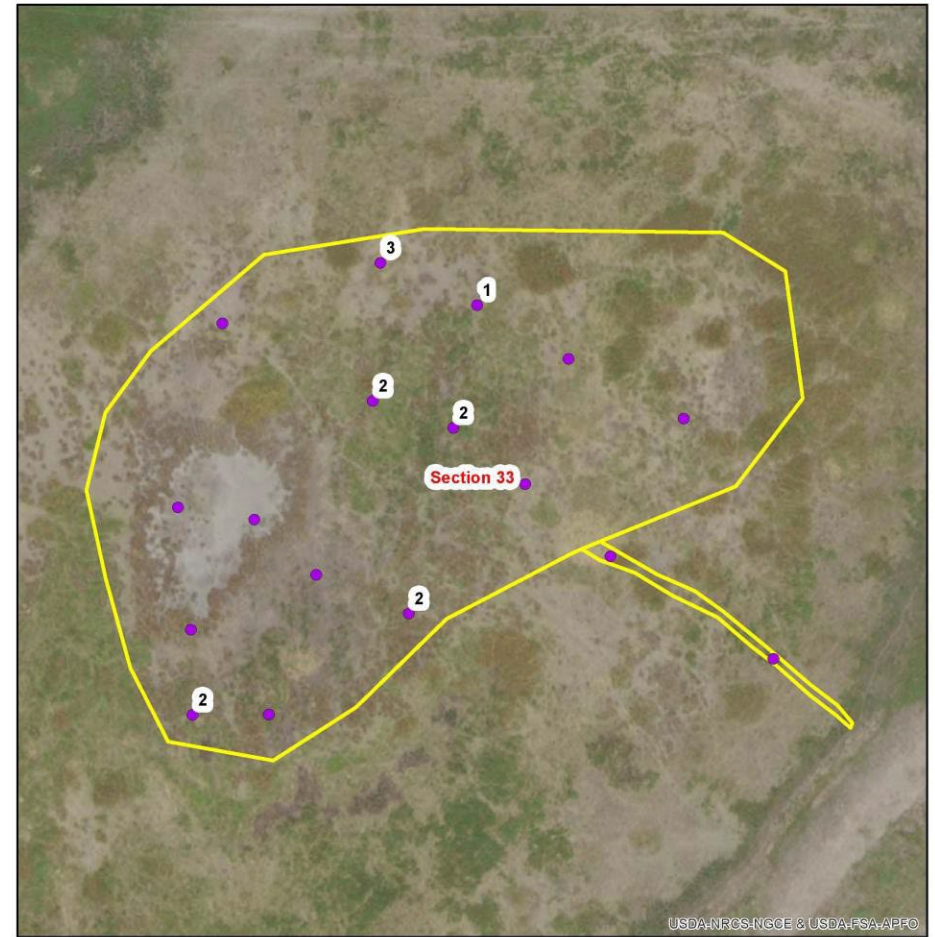


Some fields or portions of fields may not have certified wetland determinations completed.

Map 1 of 1

Sediment Survey - Inches

Customer Name: Ayr Lake WMA **NRCS Admin. Office:** Grand Island
Legal Description: 33-7-9W Adams County **Finalized By:** Rebecca Hodges



0 80 160 320 Feet Map Created: 11/18/2020

Legend

- Points
- ▭ Sections
- ▭ Ayr Lake WMA excavation
- NAIP



Some fields or portions of fields may not have certified wetland determinations completed.

Map 1 of 1

ABBREVIATIONS LIST

BLDC = BUILDING CORNER
 BRK = BRICK
 BTM = BOTTOM
 C.L. = CENTER LINE
 CMP = CORRUGATED METAL PIPE ROUND
 CMPA = CORRUGATED METAL PIPE ARCH
 CONC. = CONCRETE
 DIA. = DIAMETER
 E = EASTING COORDINATE OR EAST
 ELEV. = ELEVATION
 EMB. = EMBANKMENT
 EPW = EDGE OF PAVEMENT
 EX. = EXISTING
 EXST. = EXISTING
 FES = FLARED END SECTION
 FX = FENCE
 GA. = GAUGE
 G.W. = GUY WIRE
 INV. = INVERT
 LAT = LATITUDE (WGS84)
 LONG = LONGITUDE (WGS84)
 L.F. = LINEAR FEET
 MISC = MISCELLANEOUS
 N = NORTHING COORDINATE OR NORTH
 NFES = NON-FLARED END SECTION
 O.C. = ON CENTER
 O.C.E.W. = ON CENTER EACH WAY
 OHE = OVERHEAD ELECTRIC
 P.I. = POINT OF INTERSECTION
 P.I. = POINT OF INTERSECTION
 P.T. = POINT OF TANGENCY
 RCP = REINFORCED CONCRETE PIPE
 RD = ROAD
 REM. = REMOVE
 REQ'D = REQUIRED
 R.O.W. = RIGHT OF WAY
 S = SOUTH
 SED. = SEDIMENT
 SHLD. = SHOULDER
 SLP. = SLOPE
 STPLC = STORP LOG
 TBM = TEMPORARY BENCHMARK
 TEL. = TELEPHONE/COMMUNICATIONS
 UG = UNDERGROUND
 VEG. = VEGETATION
 W = WEST OR WITH
 WCS = WATER CONTROL STRUCTURE
 WL = WATER LEVEL
 WS = WATER SHOT

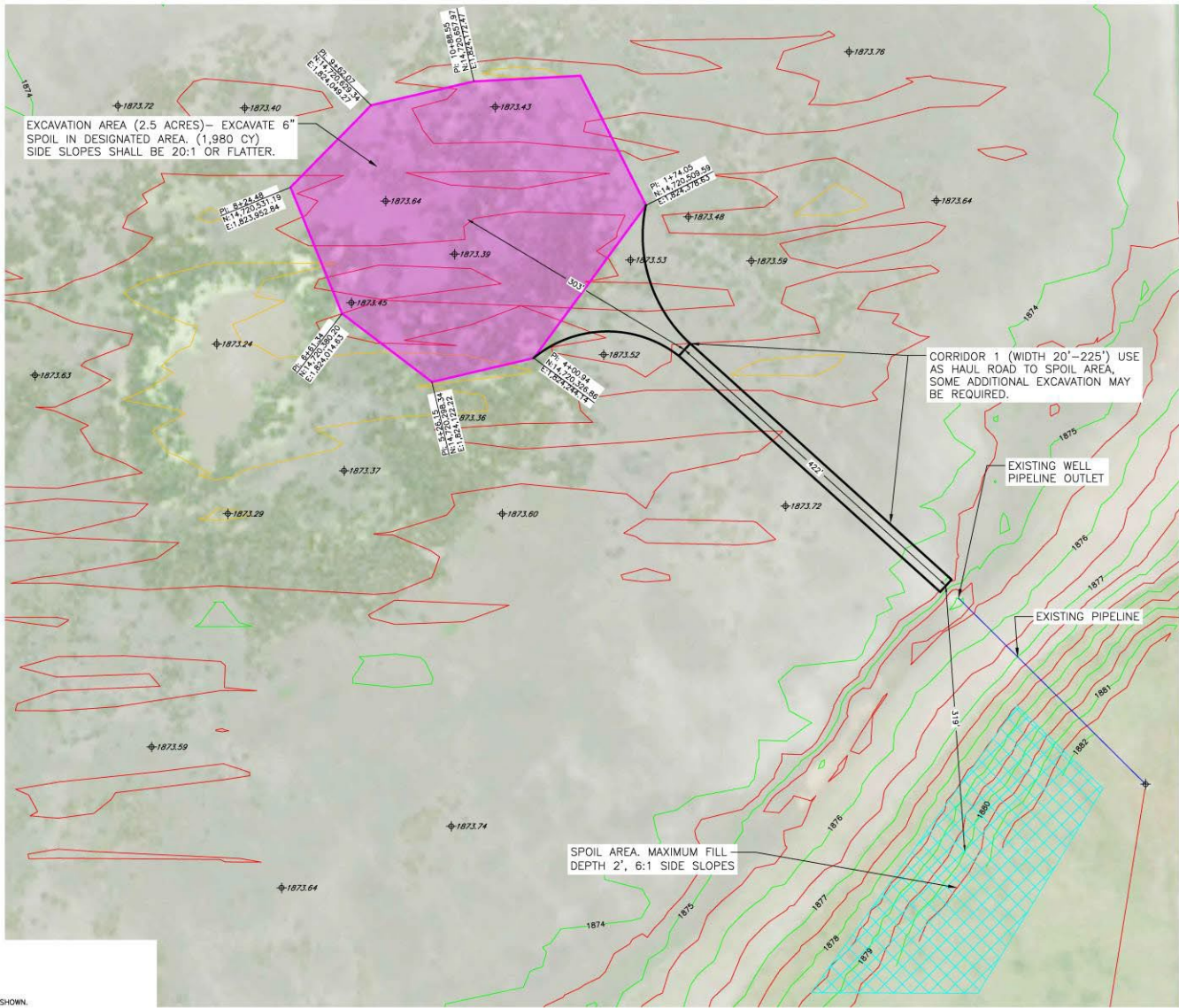
*NOTE: NOT ALL ABBREVIATIONS IN THIS LIST APPEAR ON THIS SHEET

GENERAL NOTES

- ONE HALF FOOT CONTOUR INTERVAL SHOWN.
- 2018 1 METER RESOLUTION AERIAL IMAGERY IS SHOWN.
- ITALICIZED TEXT DENOTES EXISTING FEATURE OR EXISTING ELEVATION.
- SPOT ELEVATIONS INDICATED BY "XXXX.X" ARE RANDOMLY LOCATED AND ARE BASED ON SURFACE MODEL ELEVATIONS.

THIS MATERIAL, DATA AND INFORMATION IS THE PROPERTY OF DUCKS UNLIMITED, INC. IT MAY NOT BE USED OR REPRODUCED FOR ANY PURPOSE WITHOUT THE PRIOR WRITTEN CONSENT OF AN AUTHORIZED AGENT OF DUCKS UNLIMITED, INC. DUCKS UNLIMITED, INC. MAKES NO REPRESENTATION OR WARRANTY OF ANY KIND REGARDING THIS MATERIAL, DATA AND INFORMATION, INCLUDING, BUT NOT LIMITED TO, THE ACCURACY OF THE MATERIAL, DATA AND INFORMATION OR ITS SUITABILITY FOR ANY PURPOSE. ALL USE OF THE MATERIAL, DATA AND INFORMATION IS AT THE USER'S SOLE RISK. BY USING ANY OF THIS MATERIAL, DATA AND INFORMATION, USER AGREES THAT DUCKS UNLIMITED, INC. IS NOT RESPONSIBLE FOR THEIR USE OF THE MATERIAL, DATA AND INFORMATION OR THE RESULTS THEREOF.

HORIZONTAL AND VERTICAL CONTROL OPUS SOLUTION - COORDINATES ARE UTM ZONE 14 GRID COORDINATES IN US FEET (NAD83). THEY WERE ESTABLISHED FROM THE WGS84 ELLIPSOID WITH INFORMATION FROM A TRIMBLE R10 SURVEY GRADE GPS RECEIVER ON SEPTEMBER 17, 2021 AT DUCKS UNLIMITED CONTROL POINT DU-314 AND CALIBRATED TO AN OPUS POSITION OCCUPIED FOR 3 HOURS AND 16 MINUTE(S) AND SENT TO NOS FOR SOLUTION. THE VERTICAL CONTROL CAME FROM THE SAME SOLUTION USING GEOID 18 CONUS IN THE NAD83. THE FULL OPUS SOLUTION REPORT IS ON FILE AT THE DUCKS UNLIMITED ENGINEERING DEPARTMENT IN GRAND ISLAND, NEBRASKA.



OVERALL PLAN VIEW
 SCALE 1" = 60'

FINISH NOTE: THE CONTRACTOR IS RESPONSIBLE FOR PROVIDING A SMOOTH FINISHED SURFACE FREE OF RUTS AND DROTS. EXCAVATION AREAS AND CORRIDOR 1 SHALL NOT BE DISKED OR DISTURBED ONCE FINISHED GRADE HAS BEEN REACHED. SPOIL AREA MAY BE DISKED OR HARROWED AS A MEANS OF SMOOTHING THE SURFACE, BUT IT IS NOT REQUIRED.

- EXCAVATION AREA NOTES:**
- REMOVAL OF VEGETATION FROM THE EXCAVATION AND SPOIL AREAS IS NOT REQUIRED.
 - REMOVAL, STOCKPILING, AND RESPIDING OF TOPSOIL WITHIN THE EXCAVATION AND SPOIL AREAS IS NOT REQUIRED.
 - SIDE SLOPES OF THE EXCAVATION SHALL BE 20:1 OR FLATTER. ENGINEER WILL PROVIDE STAKING FOR THE TOE OF THE EXCAVATION AREAS AND APPROXIMATE LOCATION OF SPOIL MATERIAL.
 - THE HAUL ROUTE BETWEEN EXCAVATION AREAS AND SPOIL AREA SHALL BE WITHIN CORRIDOR 1. ADDITIONAL EXCAVATION WITHIN CORRIDOR 1 MAY BE REQUIRED TO REMOVE SPILLED MATERIALS AND MAINTAIN POSITIVE DRAINAGE TOWARD THE EXCAVATION AREA.

EXCAVATION AREA		
PI STATION	NORTHING	EASTING
0+00.00	14,720,664.8694'	1,824,299.9963'
1+74.05	14,720,509.9939'	1,824,378.6266'
4+00.94	14,720,326.8575'	1,824,244.1399'
5+26.15	14,720,298.3436'	1,824,122.2151'
6+61.34	14,720,380.2076'	1,824,014.6282'
9+24.48	14,720,531.1917'	1,823,952.8445'
9+62.07	14,720,629.3402'	1,824,049.2705'
10+88.55	14,720,657.9691'	1,824,172.4652'
12+16.27	14,720,664.8694'	1,824,299.9963'

DUCKS UNLIMITED INC.
 GREAT PLAINS REGIONAL OFFICE
 DATE: 4/6/2022

PROJECT NO. NE-106-5
 AYR LAKE-PUMPING POOL

DESIGNED BY: CDC
 DRAWN BY: CDC
 SURVEYED BY: CDC
 CHECKED BY: CDC

OVERALL PLAN
 SHEET NO. 2 OF 2
 APPROVED BY: [Signature] APPROVED BY: [Signature]

ABBREVIATIONS LIST

- BLDC = BUILDING CORNER
- BRK = BRICK
- BTM = BOTTOM
- C.L. = CENTER LINE
- CMP = CORRUGATED METAL PIPE ROUND
- CMPA = CORRUGATED METAL PIPE ARCH
- CONC. = CONCRETE
- DA. = DIAMETER
- E = EASTING COORDINATE OR EAST
- ELEV. = ELEVATION
- EMB. = EMBANKMENT
- EPW = EDGE OF PAVEMENT
- EX. = EXISTING
- EXIST. = EXISTING
- FES = FLARED END SECTION
- FX = FENCE
- GA. = GAUGE
- G.W. = GUY WIRE
- INV. = INVERT
- LAT = LATITUDE (WGS84)
- LONG = LONGITUDE (WGS84)
- L.F. = LINEAR FEET
- MISC = MISCELLANEOUS
- N = NORTHING COORDINATE OR NORTH
- NFES = NON-FLARED END SECTION
- O.C. = ON CENTER
- O.C.E.W. = ON CENTER EACH WAY
- OHE = OVERHEAD ELECTRIC
- P.I. = POINT OF INTERSECTION
- P.L. = POINT OF INTERSECTION
- P.T. = POINT OF TANGENCY
- RCP = REINFORCED CONCRETE PIPE
- RD = ROAD
- REM. = REMOVE
- REQ'D = REQUIRED
- R.O.W. = RIGHT OF WAY
- S = SOUTH
- SED. = SEDIMENT
- SHLD. = SHOULDER
- SLP. = SLOPE
- STPLC = STORPILE
- TBM = TEMPORARY BENCHMARK
- TEL. = TELEPHONE/COMMUNICATIONS
- UG = UNDERGROUND
- VEG. = VEGETATION
- W = WEST OR WITH
- WCS = WATER CONTROL STRUCTURE
- WL = WATER LEVEL
- WS = WATER SHOT

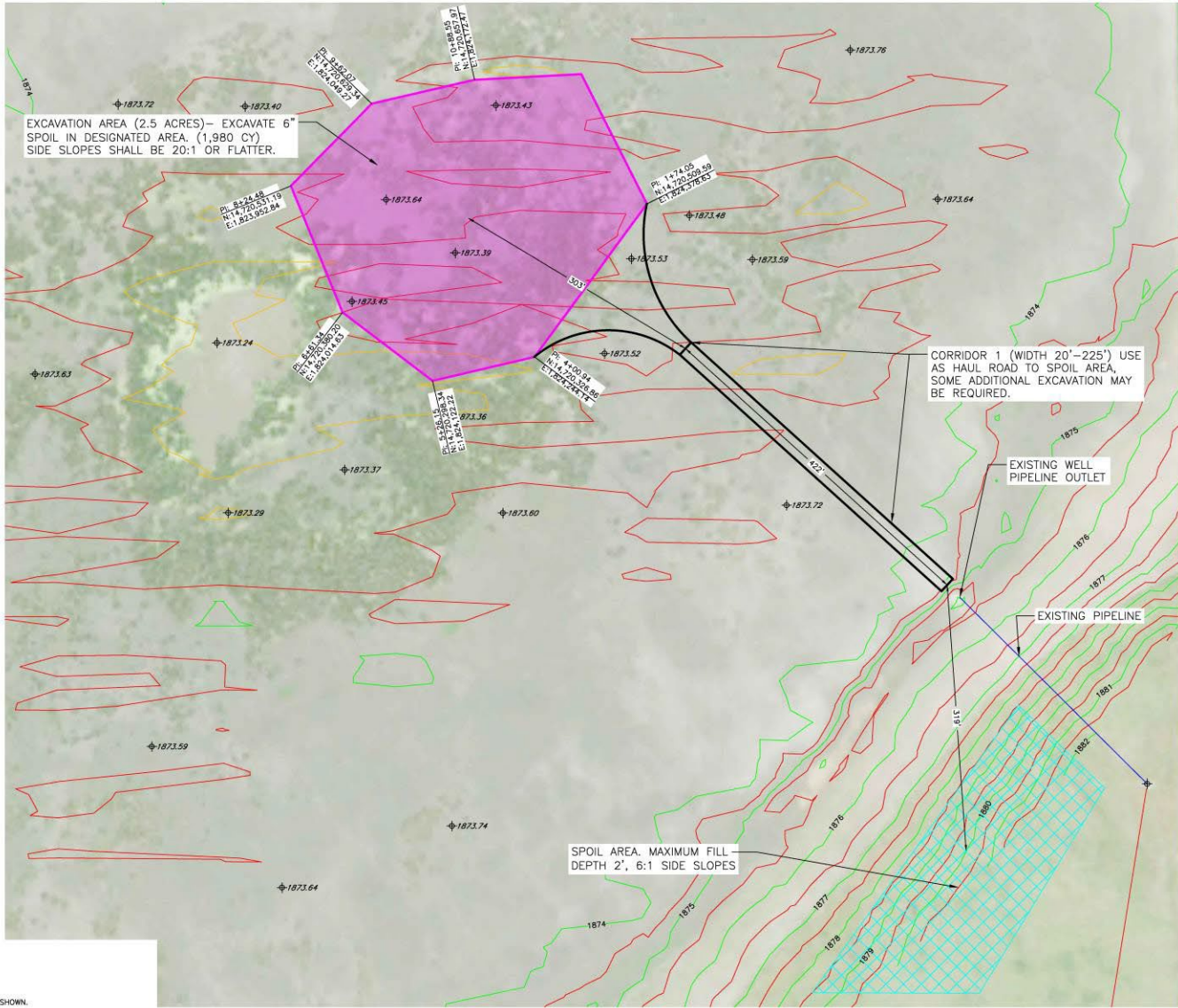
*NOTE: NOT ALL ABBREVIATIONS IN THIS LIST APPEAR ON THIS SHEET

GENERAL NOTES

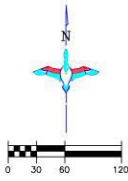
1. ONE HALF FOOT CONTOUR INTERVAL SHOWN.
2. 2018 1 METER RESOLUTION AERIAL IMAGERY IS SHOWN.
3. ITALICIZED TEXT DENOTES EXISTING FEATURE OR EXISTING ELEVATION.
4. SPOT ELEVATIONS INDICATED BY ϕ XXXX.X ARE RANDOMLY LOCATED AND ARE BASED ON SURFACE MODEL ELEVATIONS.

THIS MATERIAL, DATA AND INFORMATION IS THE PROPERTY OF DUCKS UNLIMITED, INC. IT MAY NOT BE USED OR REPRODUCED FOR ANY PURPOSE WITHOUT THE PRIOR WRITTEN CONSENT OF AN AUTHORIZED AGENT OF DUCKS UNLIMITED, INC. DUCKS UNLIMITED, INC. MAKES NO REPRESENTATION OR WARRANTY OF ANY KIND REGARDING THIS MATERIAL, DATA AND INFORMATION, INCLUDING, BUT NOT LIMITED TO, THE ACCURACY OF THE MATERIAL, DATA AND INFORMATION OR ITS SUITABILITY FOR ANY PURPOSE. ALL USE OF THE MATERIAL, DATA AND INFORMATION IS AT THE USER'S SOLE RISK. BY USING ANY OF THIS MATERIAL, DATA AND INFORMATION, USER AGREES THAT DUCKS UNLIMITED, INC. IS NOT RESPONSIBLE FOR THEIR USE OF THE MATERIAL, DATA AND INFORMATION OR THE RESULTS THEREOF.

HORIZONTAL AND VERTICAL CONTROL OPUS SOLUTION- COORDINATES ARE UTM ZONE 14 GRID COORDINATES IN US FEET (NAD83). THEY WERE ESTABLISHED FROM THE WGS84 ELLIPSOID WITH INFORMATION FROM A TRIMBLE R10 SURVEY GRADE OPS RECEIVER ON SEPTEMBER 17, 2021 AT DUCKS UNLIMITED CONTROL POINT DU-314 AND CALIBRATED TO AN OPUS POSITION OCCUPIED FOR 3 HOURS AND 16 MINUTE(S) AND SENT TO NOS FOR SOLUTION. THE VERTICAL CONTROL CAME FROM THE SAME SOLUTION USING GEOID 18 CONUS IN THE NAD83. THE FULL OPUS SOLUTION REPORT IS ON FILE AT THE DUCKS UNLIMITED ENGINEERING DEPARTMENT IN GRAND ISLAND, NEBRASKA.



OVERALL PLAN VIEW
SCALE 1" = 60'



FINISH NOTE: THE CONTRACTOR IS RESPONSIBLE FOR PROVIDING A SMOOTH FINISHED SURFACE FREE OF RUTS AND DROTS. EXCAVATION AREAS AND CORRIDOR 1 SHALL NOT BE DISKED OR DISTURBED ONCE FINISHED GRADE HAS BEEN REACHED. SPOIL AREA MAY BE DISKED OR HARROWED AS A MEANS OF SMOOTHING THE SURFACE, BUT IT IS NOT REQUIRED.

- EXCAVATION AREA NOTES:**
1. REMOVAL OF VEGETATION FROM THE EXCAVATION AND SPOIL AREAS IS NOT REQUIRED.
 2. REMOVAL, STOCKPILING, AND RESPREADING OF TOPSOIL WITHIN THE EXCAVATION AND SPOIL AREAS IS NOT REQUIRED.
 3. SIDE SLOPES OF THE EXCAVATION SHALL BE 20:1 OR FLATTER. ENGINEER WILL PROVIDE STAKING FOR THE TOE OF THE EXCAVATION AREAS AND APPROXIMATE LOCATION OF SPOIL MATERIAL.
 4. THE HAUL ROUTE BETWEEN EXCAVATION AREAS AND SPOIL AREA SHALL BE WITHIN CORRIDOR 1. ADDITIONAL EXCAVATION WITHIN CORRIDOR 1 MAY BE REQUIRED TO REMOVE SPILLED MATERIALS AND MAINTAIN POSITIVE DRAINAGE TOWARD THE EXCAVATION AREA.

PI STATION	NORTHING	EASTING
0+00.00	14,720,664.8694'	1,824,299.9963'
1+74.05	14,720,509.9939'	1,824,378.6266'
4+00.94	14,720,326.8575'	1,824,244.1399'
5+26.15	14,720,298.3436'	1,824,122.2151'
6+61.34	14,720,380.2076'	1,824,014.6282'
9+24.48	14,720,531.1917'	1,823,952.8443'
9+62.07	14,720,629.3402'	1,824,049.2705'
10+88.55	14,720,657.9691'	1,824,172.4652'
12+16.27	14,720,664.8694'	1,824,299.9963'

May 2022

DUCKS UNLIMITED	PROJECT NO. NE-106-5	DESIGNED BY: CDC
	AYR LAKE-PUMPING POOL	DRAWN BY: CDC
ENGINEERS	OVERALL PLAN	
	DATE: 4/6/2022	CHECKED BY: CDC
OFFICE: 2 OF 2	APPROVED BY:	APPROVED BY:



Management Activities

Spot spraying cattails, smooth brome.

Grazing

Prescribed fire

Mowing/rototilling wetland

Flooding wetland for hunting

