



# Rainwater Basin Wetland Complex Image Library

## Rainwater Basin Joint Venture

2550 North Diers Ave, Suite G, Grand Island, NE 68803

The Rainwater Basin Image Library is a collection of aerial imagery acquired by the Rainwater Basin Joint Venture (RWBJV). All images are sub-meter, 4-band (color/near-infrared). Image collections were compiled in 2004 and annually from 2006-2018. The RWBJV has plans to continue annual collections beyond 2018.

Spring images were obtained to estimate the amount of flooded habitat available to migratory birds during migration (see RWBJV Annual Habitat Surveys). It is important to note that ponding conditions can vary substantially throughout the migration season, thus these images provide a snapshot only of ponding conditions at the time of collection. Annual imagery also assists the RWBJV in prioritizing conservation and restoration activities. By identifying areas that experience frequent drown-out, the RWBJV can target land-owners who might be willing to collaborate on projects.

Two years of late summer imagery are also available - for 2004 and 2012. These images were used by the RWBJV to create vegetation maps for the Rainwater Basin Wetland Complex (see Rainwater Basin 2012 Wetland Vegetation Map). The spring and late summer images, combined with National Agriculture Imagery Program (NAIP) mid-summer imagery, allowed the RWBJV to analyze temporal variation of plant growth cycles to better differentiate between plant communities.

The Rainwater Basin Joint Venture has made these images publicly available in MrSID format at the link below. Additional years will be available for download as soon as they are processed and uploaded: <https://www.sciencebase.gov/catalog/folder/57864fccc4b0e02680c0eb30>

Images were acquired by contract with Cornerstone Mapping, Lincoln, Nebraska and through the U.S. Fish and Wildlife Service.

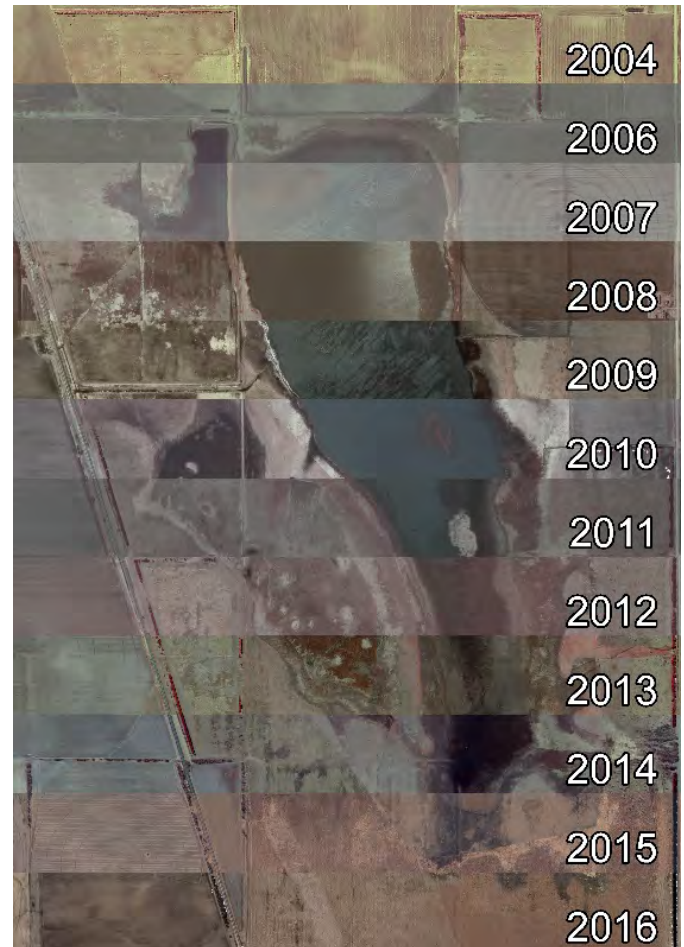


Figure 1. Examples of annual images for the U.S. Fish and Wildlife Service's Harvard Waterfowl Production Area